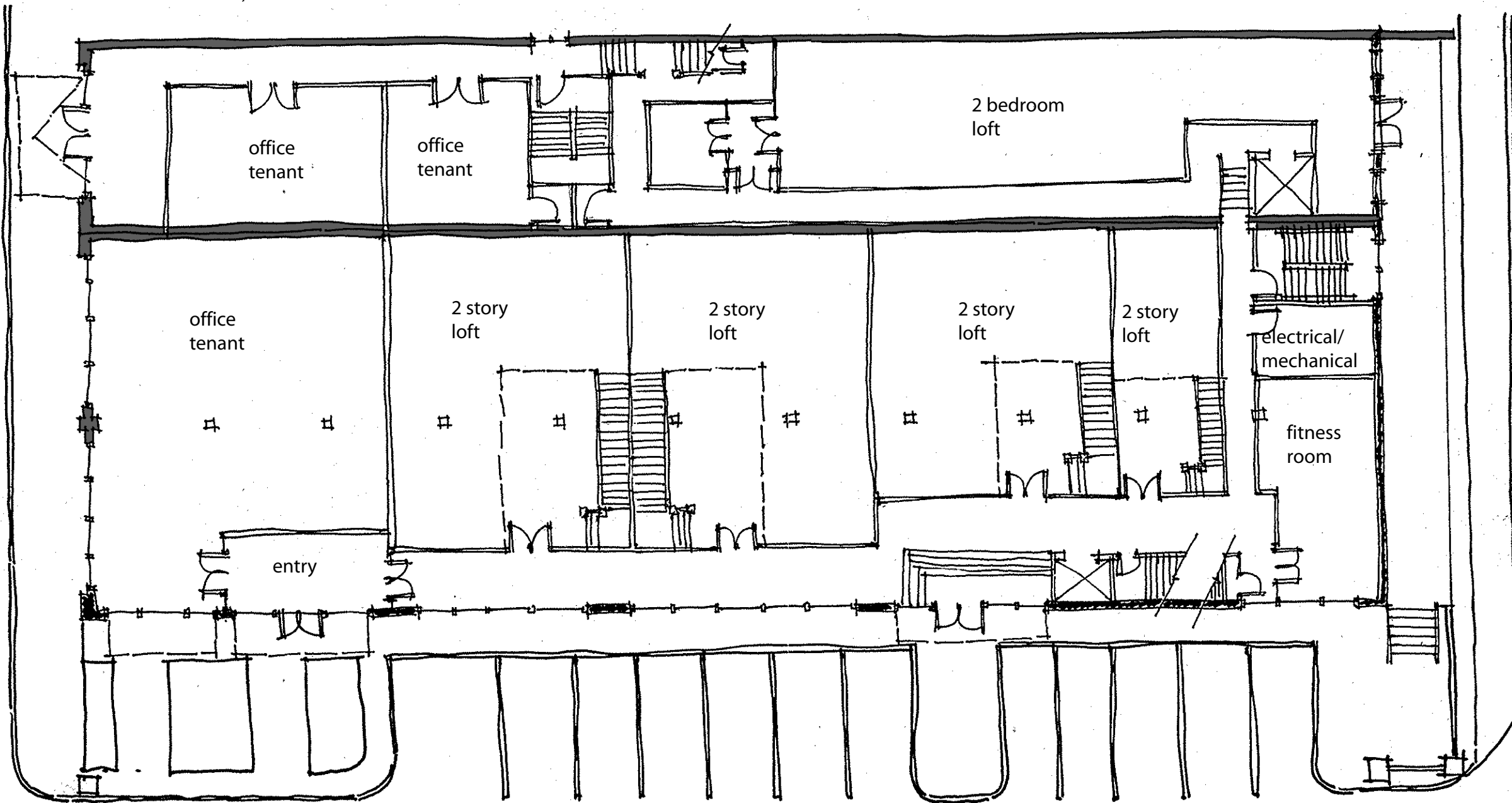


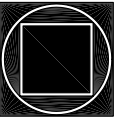
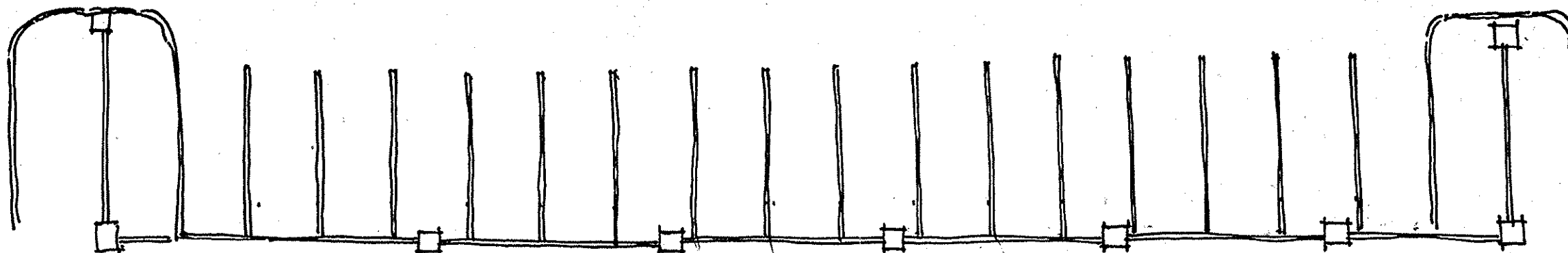
1st Avenue North

Morris Avenue



### SCHEMATIC FIRST LEVEL FLOOR PLAN

1/16"=1'-0"



**GOODWYN, MILLS  
& CAWOOD, INC.**

**ENGINEERING  
ARCHITECTURE  
LANDSCAPE ARCHITECTURE  
PLANNING**

125 Interstate Park Drive, P. O. Box 3605  
Montgomery Alabama 36109  
Phone: (334) 271.3200  
Fax: (334) 272.1566

1102 South 20<sup>th</sup> Street  
Birmingham Alabama 35205  
Phone: (205) 879.4462  
Fax: (205) 879.4493

41 W. I-65 Service Road North, Suite 430  
Mobile Alabama 36693  
Phone: (251) 662.1947  
Fax: (251) 662.1948

**ASSOCIATE ARCHITECT**  
NHB Group, LLC  
181 West Valley Avenue, Suite 100  
Birmingham, Alabama 35209  
Phone: (205) 941.1515  
Fax: (205) 941.1518

**STRUCTURAL ENGINEER**  
Tucker-Jones Engineers Associates, PC  
3300 Cahaba Road, Suite 210  
Birmingham, Alabama 35223  
Phone: (205) 879.5660  
Fax: (205) 879.5606

**PLUMB. & MECH. ENGINEER**  
MW/Davis Dumas & Associates, Inc.  
(Successor to Miller & Weaver, Inc.)  
2720 3rd Avenue South  
Birmingham, Alabama 35233  
Phone: (205) 252.0246  
Fax: (205) 251.8506

**ELECTRICAL ENGINEER**  
Sajjadish Engineering  
1507 Alex Drive  
Birmingham, Alabama 35210  
Phone: (205) 833.7033  
Fax: (205) 314.0180

**KITCHEN CONSULTANT**  
Restuarant Design Service, Inc.  
202 1/2 C East Broad Street  
Eufaula, Alabama 36027  
Phone: (334) 616.7192  
Fax: (334) 616.7194

**HARDWARE CONSULTANT**  
Mullins Building Products  
5631-C Clifford Circle  
Birmingham, Alabama 35210  
Phone: (205) 836.0011  
Fax: (205) 836.0519